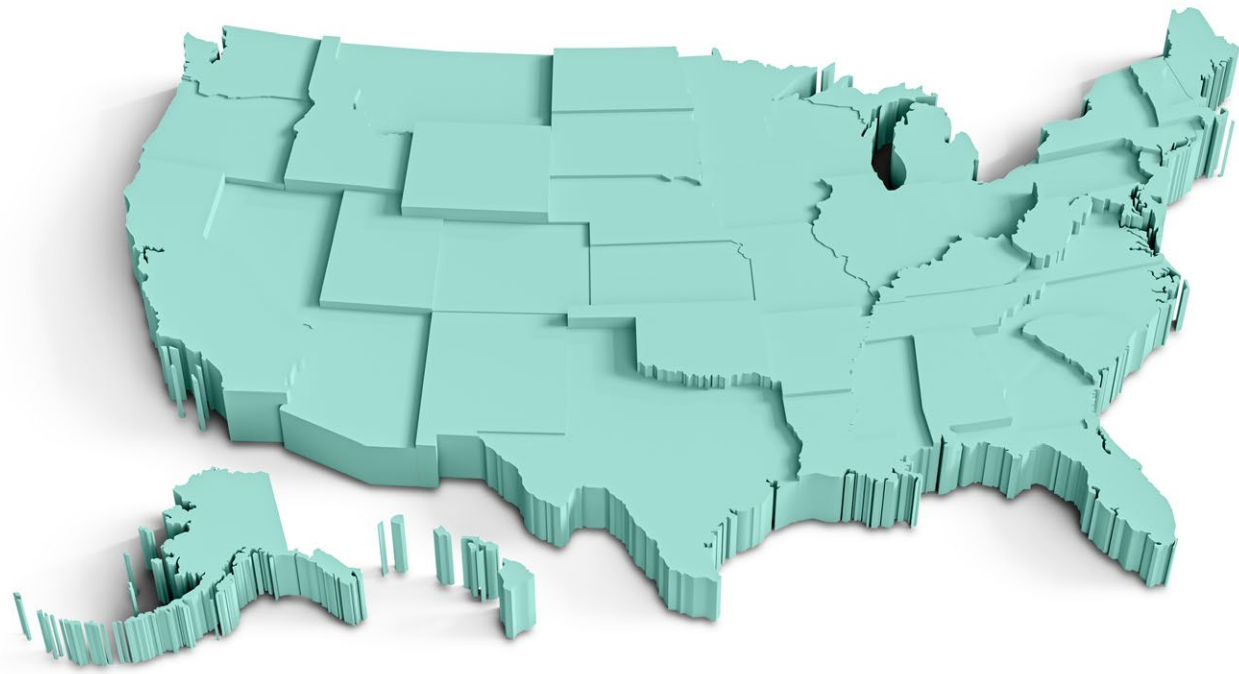


Selling throughout the United States.



Proudly Made in USA



Email. Order@diamond-screen.com
Tel. +1 626-589-8852
Add. 224 E Arrow Hwy, San Dimas, CA 91773

Diamond screen Inc®



Windows & Door ©
SCREEN

**EASY INSTALLATION AND
REPLACEMENT**

Can Be Installed On
Any Door Or Window



PRODUCT CATALOG.

SCREEN Experience Clear Views with Pet-Proof and Insect-Proof Protection.

 **SLIDING**
DOORS

 **SWING**
DOORS

 **DOUBLE**
DOORS



 **SLIDING**
WINDOWS

 **FIXED**
WINDOWS

 **ORIGINAL**
WINDOWS

DIAMOND SCREEN

As a trusted Southern California business, we offer premium products crafted with durable aluminum alloy frames and resilient stainless steel mesh, designed to provide exceptional strength and longevity.

2 WEEKS, 3 COLORS, 10 YEARS PRODUCT LIFE.

Experience perfection in just 10 business days!
Select from a refined palette of 3 distinct hues: white, sandstone, and dark bronze.
Enjoy 10 years of unwavering quality.

**Dark bronze is exclusively for selected products*



Elevating Your Experience with Every Detail



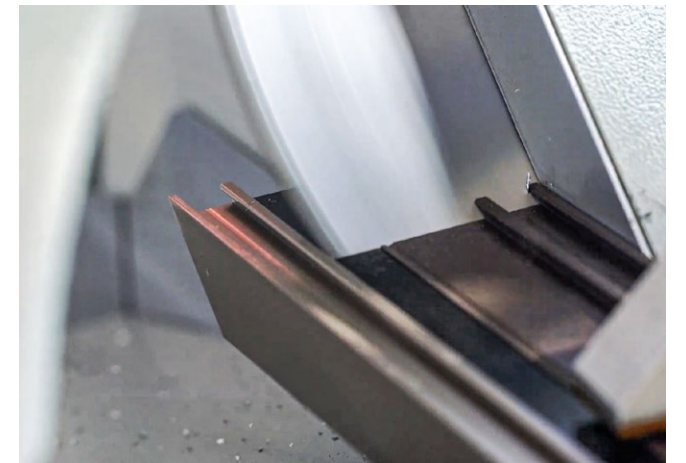
US-based factory, proudly manufactured in the USA.

Stronger Durability for Extra Protection.

Our screen doors and windows feature a stainless steel mesh that is both insect and pet proof, offering superior durability and easy maintenance.

Seamless Installation.

Concerned about installation? We've got you covered! Enjoy hassle-free, rapid setup with our products, meticulously designed for your convenience.



Secure Your Home and Family.

Swing Door with Aluminum Alloy Frame and Stainless Steel Mesh

DS1

NEW THICKENED ALUMINUM PROFILE DESIGN

Combined with 0.45 stainless steel mesh to prevent mosquitoes.



French Door with Aluminum Alloy Frame and Stainless Steel Mesh

DS1 PLUS

SAME APPEARANCE AS THE ORIGINAL DOOR

Matching the color of the original door.





Two-Track Sliding Door with Aluminum Alloy Frame and Stainless Steel Mesh

DS2

PROTECTS YOUR PATIO DOORS PERFECTLY

Extra panel, extra security. 3" densely spaced carbon steel screws are used for fastening the screens.

*This product requires an additional track to be mounted for installation.



SLIDING



Original Screen Door with Aluminum Alloy Frame and Stainless Steel Mesh

DS2 OI

NO NEED TO INSTALL ANY EXTRA TRACKS

Our screen door seamlessly replaces your original screen door, offering a flawless upgrade to your home.



SLIDING



Fixed Screen Window with Aluminum Alloy Frame and Stainless Steel Mesh

DS3

ABSOLUTE, ENHANCED SECURITY

Our fixed screen window with stainless steel mesh adds an enhanced layer of security, making it more difficult for intruders to access or break your glass windows. This additional barrier also improves child safety by preventing easy access to open windows, reducing the risk of falls.



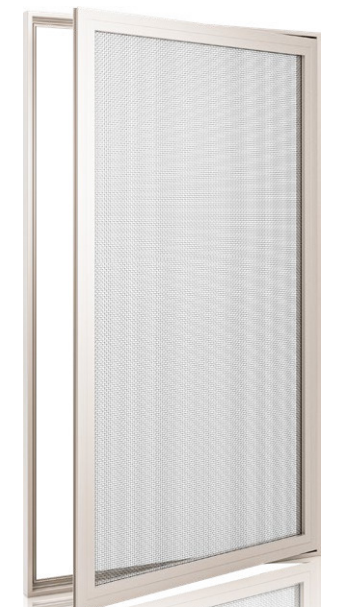
FIXED

Casement Screen Window with Aluminum Alloy Frame and Stainless Steel Mesh

DS3 Plus

SUPERIOR VENTILATION AND UNOBSTRUCTED VIEWS

Attached with magnetic strip for window closing, this product offers an alternative solution for customers seeking to still have the ability to open the screen window.



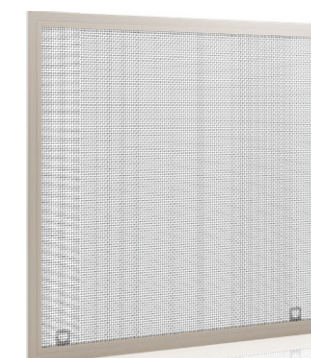
CASEMENT

Original Screen Window with Aluminum Alloy Frame and Stainless Steel Mesh

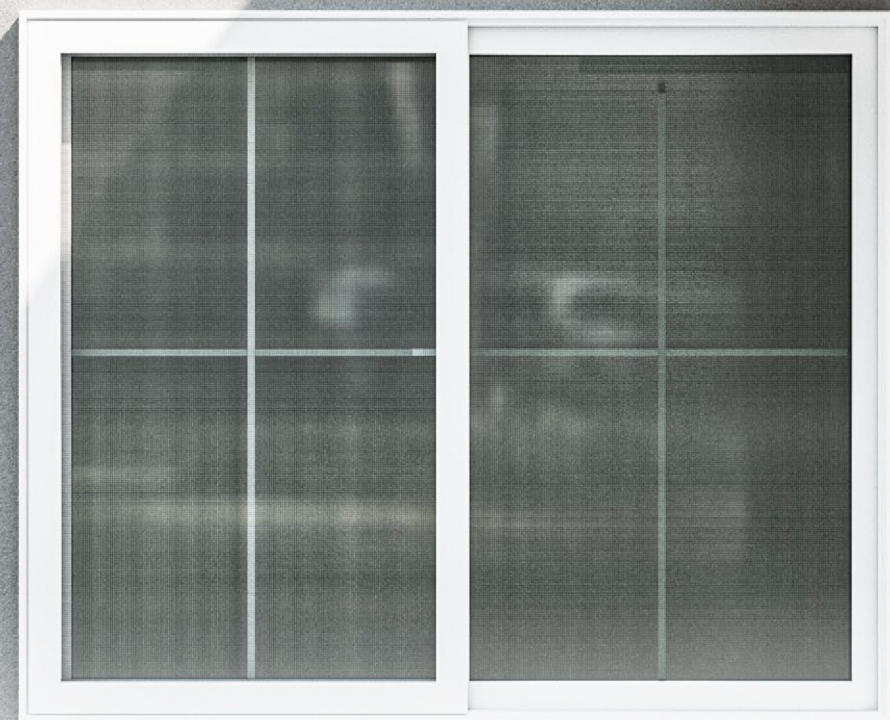
DS3 OI

EASY INSTALLATION AND REPLACEMENT

Easy and simple installation. Enhanced the original screen window with stainless steel mesh.

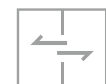


ORIGINAL



Sliding Screen Window with Aluminum Alloy Frame and Stainless Steel Mesh

DS3 Sliding



SLIDING



SAFE AND EASY FOR CLEANING THE GLASS WINDOW

Still want to have the chance to open the screen window? Designed to fit your window perfectly, and perfect solution for cleaning the glass window from the outside.

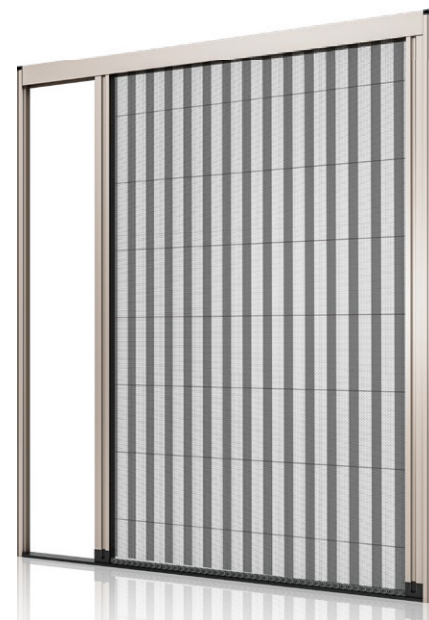


Folding Screen Door

DS9

LIGHT, CONVENIENT AND VERSATILE

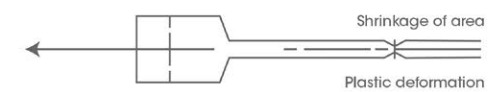
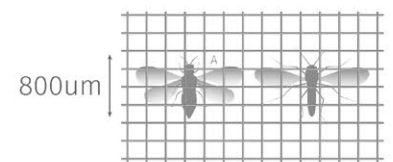
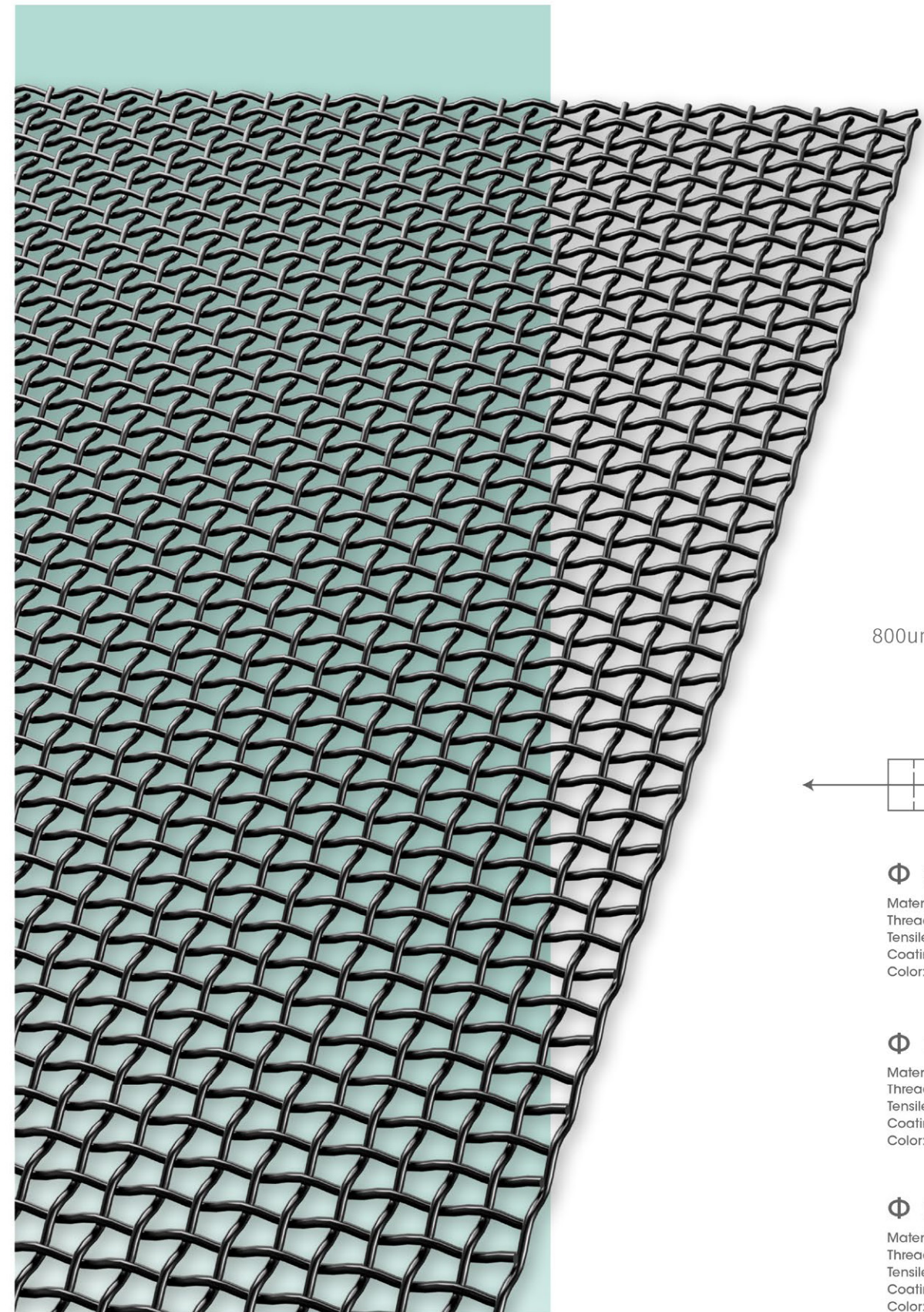
Excellent choice for great ventilation and insect proof! Our stainless steel folding screen door fits anywhere you need.



1500MPa

SECURITY MESH

「SUPER HARD STAINLESS STEEL MESH」



Φ : 0.3mm

Material: 304 Stainless steel
 Thread count: Warp 18Mesh Weft 16Mesh
 Tensile strength(MPa): 1350-1550MPa
 Coating Process: Electrostatic spraying
 Color: Black

Φ : 0.45mm

Material: 304 Stainless steel
 Thread count: 15Mesh
 Tensile strength(MPa): 700-740MPa
 Coating Process: Electrostatic spraying
 Color: Black

Φ : 0.6mm

Material: 304 Stainless steel
 Thread count: 13Mesh
 Tensile strength(MPa): 700-740MPa
 Coating Process: Electrostatic spraying
 Color: Black